



AVK MAGNUS PA12 BALL VALVES

Fusible ends / Minimum full bore

Valve sizes 4" and 6"

85/80

200

PA12/BV

The AVK MAGNUS PA12 ball valve is for use in the isolation of gas on domestic, commercial and industrial premises with operating pressures up to 260 PSI. The ends are designed for butt-/electro-fusion making the valve an integral part of the fully welded leak-free pipe system.

The valve is designed, manufactured and approved to worldwide leading standards.

Features

- Robust design, suitable for most harsh environments
- Material selection body and spigot (PA12) offering excellent resistance to crack propagation
- Seat, ball and grease combination ensuring low operating torques and avoids sticking over time
- Selected ball material offering good scratch resistance
- Grease with minimal wearing off from the lubricated surfaces for improved long term performance
- Easy mounting of all standardised spindles due to internal and external drive
- Overtorque protection and replaceable connector under live conditions
- Double spigot length allowing for two electrofusion joints
- Seat compression of large sealing surfaces precisely set via separate pre-assembly
- Flexible spindle shaft to ensure equal compression around the O-rings when loaded by internal pressure
- Traceability encoding (barcode) for natural gas distribution components as per ASTM F2897

Standards

ASME B16.40, ASTM F2785

Accessories/Options

Collar pipe adaptor for nominal pipe size of 3" down pipes



AVK MAGNUS PA12 BALL VALVES

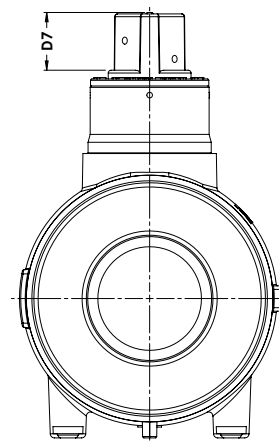
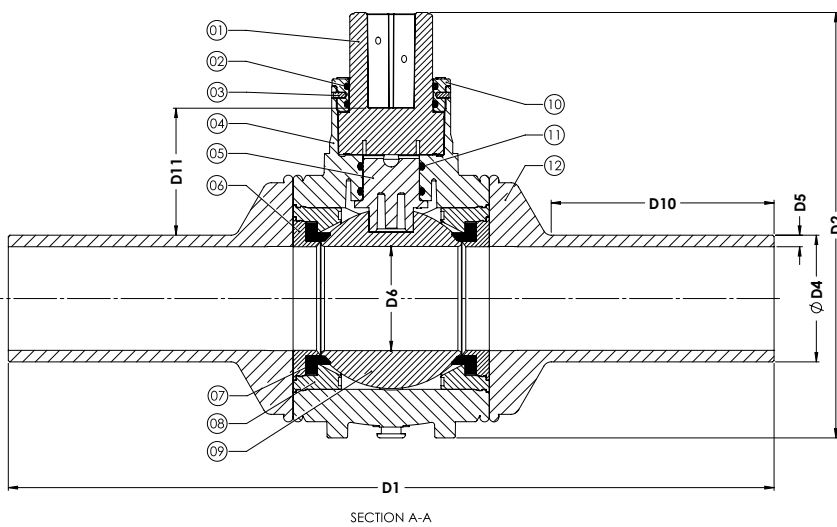
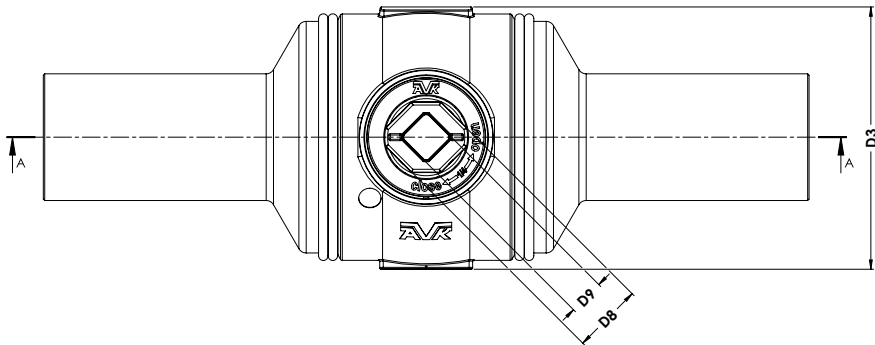
Fusible ends / Minimum full bore

Valve sizes 4" and 6"

85/80

200

PA12/BV



Component list

1. Connector	PA-GF	7. Ball seat	NBR-70
2. O-ring	NBR-70	8. Seat retainer	PA12
3. Locking pin	PVC	9. Ball	POM
4. Body	PA12	10. Bearing ring	PA
5. Stem	POM	11. O-ring	NBR-70
6. Support ring	PA12	12. Spigot	PA12

Reference nos. and dimensions

SDR	AVK ref. nos.	Valve size inch	D1 inch	D2 inch	D3 inch	D4 inch	D5 inch	D6 inch	D7 inch	D8 inch	D9 inch	D10 inch	D11 inch	Weight lb
11	85-100-8014211009	4	23.00	12.65	8.14	4.500	0.409	3.386	1.58	1.95	1.00	6.56	3.47	14.86
11	85-150-8014211009	6	27.94	15.80	11.20	6.625	0.602	4.724	1.58	1.95	1.00	7.81	4.02	36.03

Above dimensions are subject to tolerances